

# Flow Measurement, So easy

## ETM™ Flow Meter



### Compact Ultrasonic Flowmeter — Series A-X2

- α The flowmeter is directly connected to the pipeline to reduce uncertainty and is simple and reliable
- α With no professional knowledge, it can be measured with power on. With flip menu on screen, it can be used easily
- α No moving parts, straight pipe design, no pressure loss

**ACI Inc.**

# PRODUCT INTRODUCTION

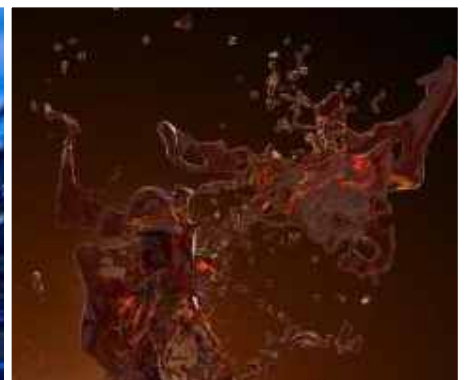
The products serve real-time flow measurement and participation process control in the production process. The main customers industries are: chemical production process, fine chemical production, cleaning industry, beverage industry, etc.

With the world's most advanced time measurement chip (time resolution of 50ps), products has developed a new generation of stable A-X2 series "ETM™" flowmeters.

The A-X2 is designed with an integral structure and can be measured simply by connecting to the pipe. It also adopts the current popular OLED display, which makes it easy to read in low light conditions.

A-X2 is widely used in the production process flow measurement and monitoring. The application of the product continuously and effectively controls the flow of the fluid, so as to improve the yield of the product and even save the input of the personnel, bringing benefits to the production enterprise.

A-X2 also satisfies different clean fluid measurements: various acids, alcohols, chemical solvents, alcohol, beverage water, Coca-Cola water, etc.





## COMPONENT PARTS

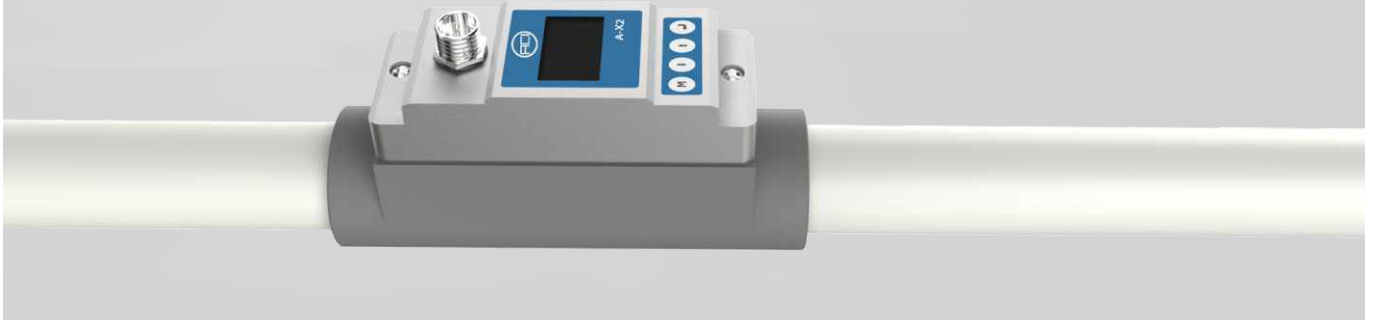


## APPLICATION



# INSTALLATION STEPS

## Installation method 1

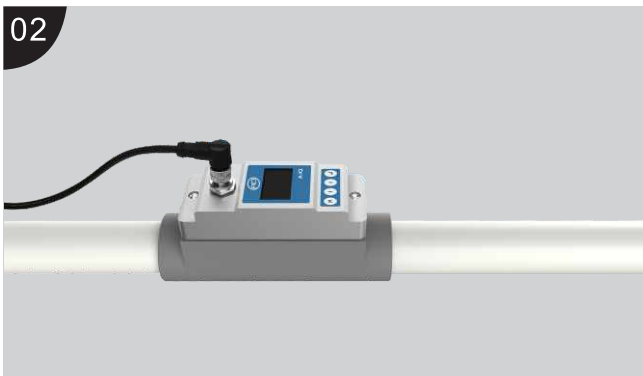


The installation is simple, apply PVC glue, and the pipeline on site can be directly connected with A-X2, which is convenient and fast.

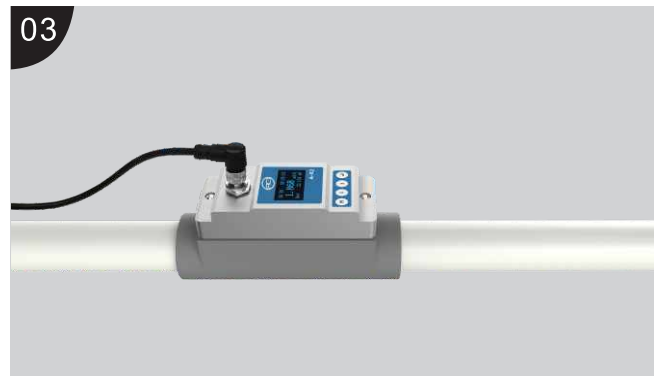
## 01 Installation method 2



Connect the pipe to the site after adding unions, and it's easy to disassemble and maintenance.



Take out the connecting cable, butt the plug and tighten it.



DC power supply at the other end of the cable, observe power supply, SQ stability above 50 means stability measurement.

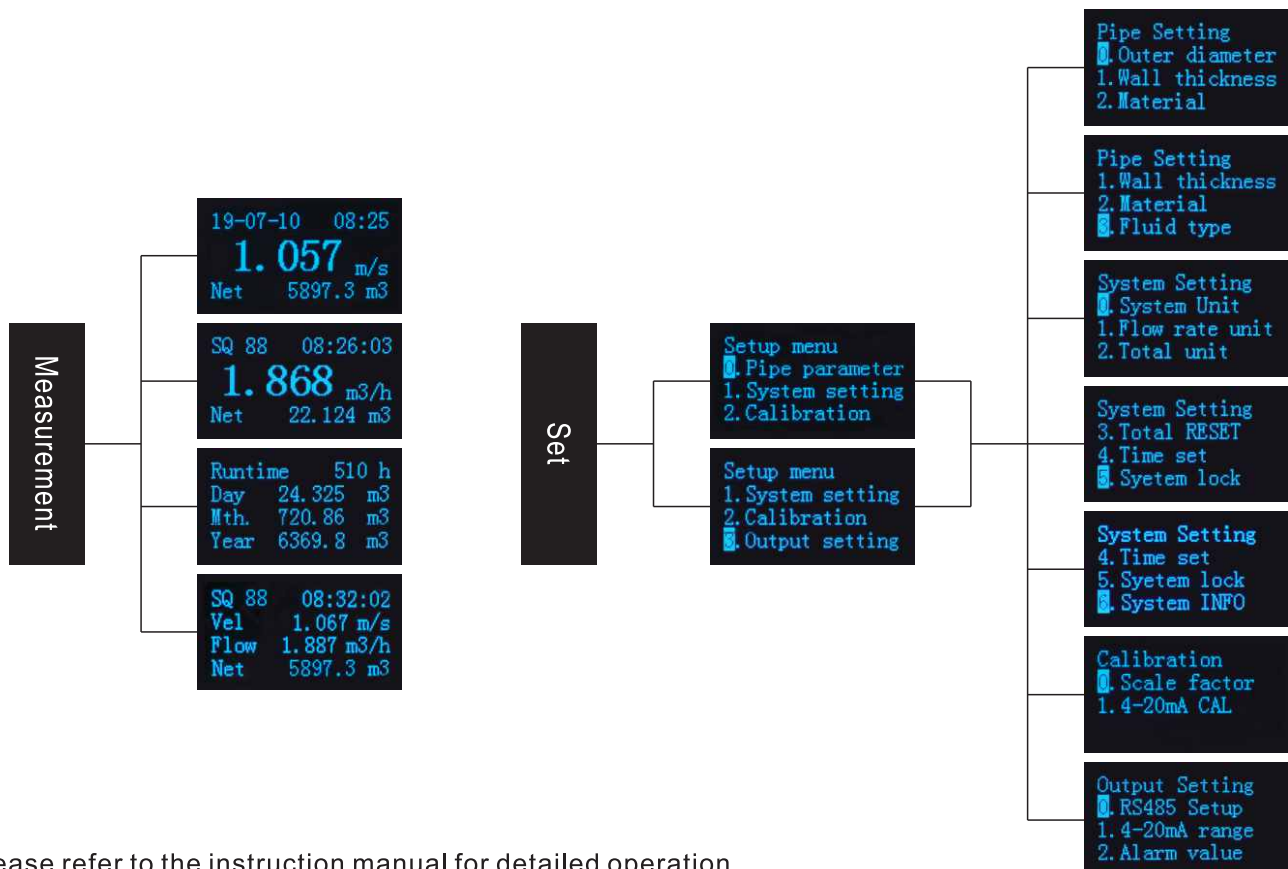
# ETM™ SETTING

## Special instructions:

ETM™, which is designed for different pipe diameter and fluids, will be set in standard setting before it leaves the factory. There is no need to reset.




## DISPLAY MENU



Please refer to the instruction manual for detailed operation

## PERFORMANCE INDEX

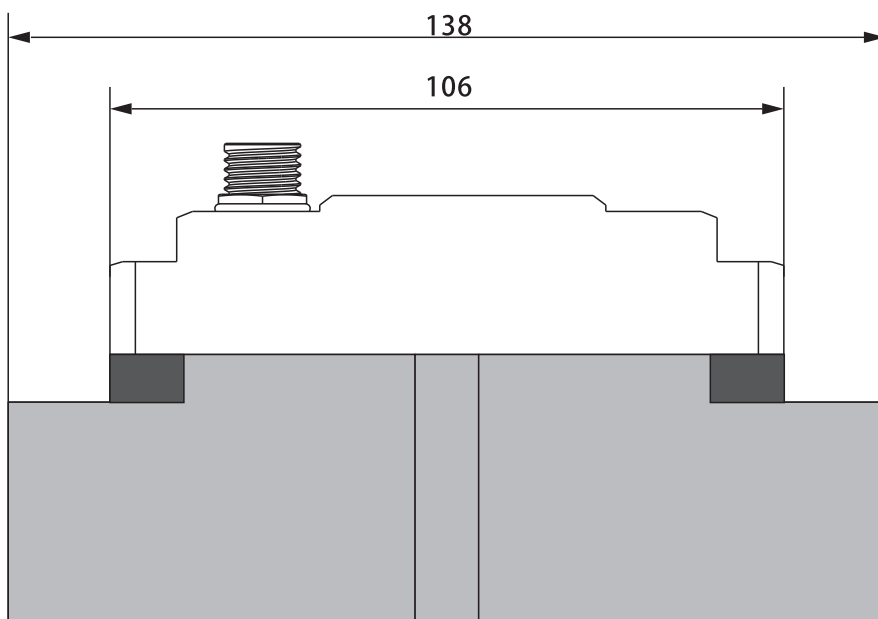
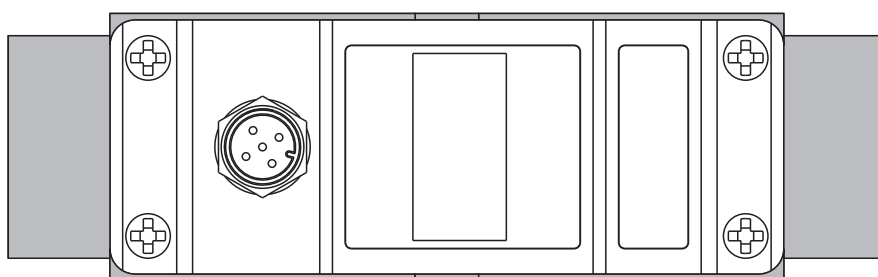
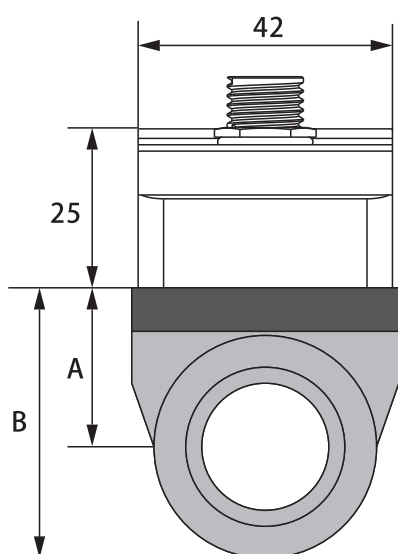
Product	ETM™ flow meter 
Model	A-X2
Flow range	0.1 m/s ~ 5.0 m/s
Accuracy	± 2.0%
Repeatability	0.8%
Pipe size	φ20(DN15), φ25(DN20), φ32(DN25), φ40(DN32), φ50(DN40), φ63(DN50)
Data storage	Daily, Monthly, and Annual. Flow Totalizer
Analog output	4~20mA, Maximum load: 600Ω
Alarm output	OCT, upper and lower limit alarm function (optional)
Communication	RS485, support Modbus communication protocol
Power supply	24 VDC
Cable length	1.8m
Keypad	Four light touch buttons
Screen	OLED 128*64 display screen
Units	Metric and Imperial units are available, Cubic Meters(m3), Liters(L), USA Gallons(GAL)/hour, /min, Default unit setting: m3/h
Totalizer	Six digit
Piper material	PVC
Case material	Aluminum alloy
Environment temp.	0°C~50°C
Medium temp.	0°C~50°C
Environment humidity	0-95% relative humidity, without condensation
IP Grade	IP54
Weight	φ20(0.28KG), φ25(0.30KG), φ32(0.38KG), φ40(0.48KG), φ50(0.60KG), φ63(0.73KG)

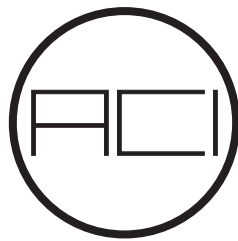
## PIPING SPECIFICATION

Model	A-X2-20	A-X2-25	A-X2-32	A-X2-40	A-X2-50	A-X2-63
Pipe diameter	$\varnothing 20$	$\varnothing 25$	$\varnothing 32$	$\varnothing 40$	$\varnothing 50$	$\varnothing 63$
Pipe diameter	15mm	20mm	25mm	32mm	40mm	50mm
Nominal name	DN15	DN20	DN25	DN32	DN40	DN50
Popular name	4"	6"	1"	1.2"	1.5"	2"

## DIMENSIONS

Model	A (mm)	B (mm)
A-X2-20	27	42
A-X2-25	30	47.5
A-X2-32	33	54
A-X2-40	36	61
A-X2-50	42	72
A-X2-63	50	86.5





# **ACI Inc.**

---

333 Hudson street, suite#1004  
New York, NY 10013 USA  
[sales@acinstrument.org](mailto:sales@acinstrument.org)  
[www.acinstrument.com](http://www.acinstrument.com)